

Polypipe Ventilation has always looked to develop solutions to meet the requirements of the installer of ventilation systems. The DOMUS range is widely regarded as the largest, most comprehensive and unique range available.

Polypipe Ventilation can now offer three unique NEW solutions to installers of ventilation systems.

### 1. Supertube 125 Universal Duct

- Provides an excellent solution to overcome awkward installations
- Offers adaptability on site and is adjustable between 0-45° in a vertical or horizontal plane
- Provides a more professional finish than rectangular flexible hose
- Robust product that is quick and easy to install
- Better airflow characteristics than flexible hose
- Connects direct to Domus Supertube 125 bends and connectors
- Supplied in 300mm lengths
- Soft material enhances acoustic properties

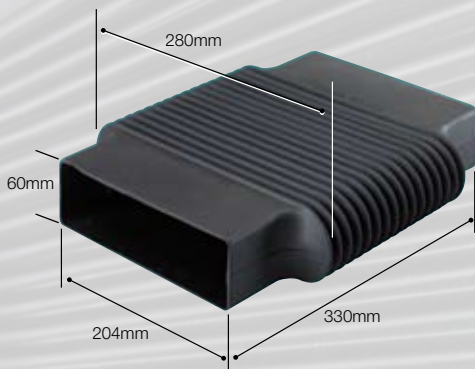
Code: 5B303

Description: Supertube 125 Universal Duct

Length: 300mm

Colour: Black

NOTE: When making a connection using the Universal Duct, seal joints using a proprietary silicone sealant.



Based on feedback received from installers, Polypipe Ventilation has developed a uniquely designed flexible duct section for the 204 x 60mm Supertube 125 ducting system. Its universal attributes provide an adaptable, easy to install and robust solution for short offsets that commonly cause problems on both new build and refurbishment.

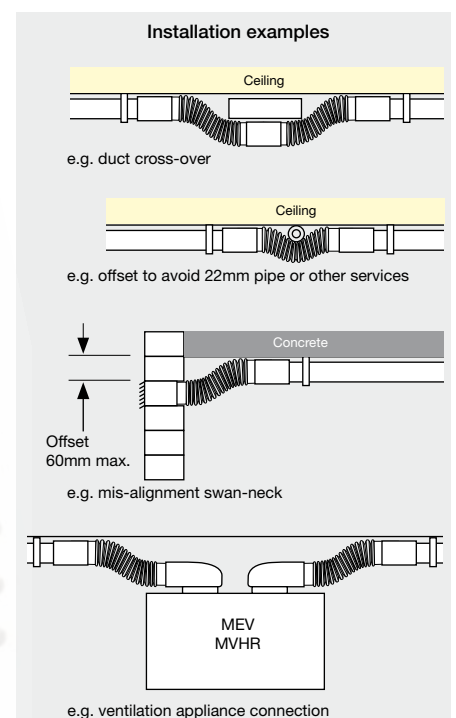
The Supertube 125 Universal Duct has been specifically manufactured in Santoprene® to not only benefit from its flexibility, but also to take advantage of its sound deadening properties. It can assist both with isolating fan noise from duct systems and also reducing noise transfer, known as flanking transmission, when a duct passes through a separating wall.

Approved Document E of the Building Regulations (2003) state:  
"Do give special attention to workmanship and detailing at the perimeter and wherever a pipe or duct penetrates the floor in order to reduce flanking transmission"



## Supertube Universal Duct

### New Product Information Sheet



### Domus MegaDuct Additions

The Domus MegaDuct range measures 220 x 90mm and is ideal for very powerful cooker hoods and for use with MVHR systems. Domus MegaDuct has the equivalent cross-sectional area of a 150mm round duct, but has the advantage of being easy to conceal and fit, due to the low rectangular profile.

The Domus MegaDuct system now has additional installation solutions with two new products being added to the range.



# Domus MegaDuct Products

## New Product Information Sheet

### 2. Domus MegaDuct 220 Equal T Piece

- Provides a rectangular junction in a multi-extraction or supply installation
- Simply fits over MegaDuct flat channel
- Ideal for MVHR installation solutions

**Code:** 982  
**Description:** MegaDuct 220 Equal T Piece  
**Colour:** White



### 3. Domus MegaDuct 220 Rectangular Wall Plate

- Used to 'make good' the internal wall when using MegaDuct
- Simply fits over MegaDuct flat channel and is screwed to the wall
- Provides a professional finish

**Code:** 115-6  
**Description:** MegaDuct 220 Rectangular Wall Plate  
**Colour:** White



**Polypipe Ventilation**  
Sandall Stones Road  
Kirk Sandall Industrial Estate  
Kirk Sandall, Doncaster  
DN3 1QR  
United Kingdom

tel: +44 (0)8443 715523  
fax: +44 (0)8443 715524

email: [vent.info@polypipe.com](mailto:vent.info@polypipe.com)  
web: [www.polypipe.com/ventilation](http://www.polypipe.com/ventilation)

Ref 3K 0508 CD1152

...the complete solution